



GAT MONTHLY MEMBERSHIP PROGRESS REPORT

Results as of: 4/30/2021

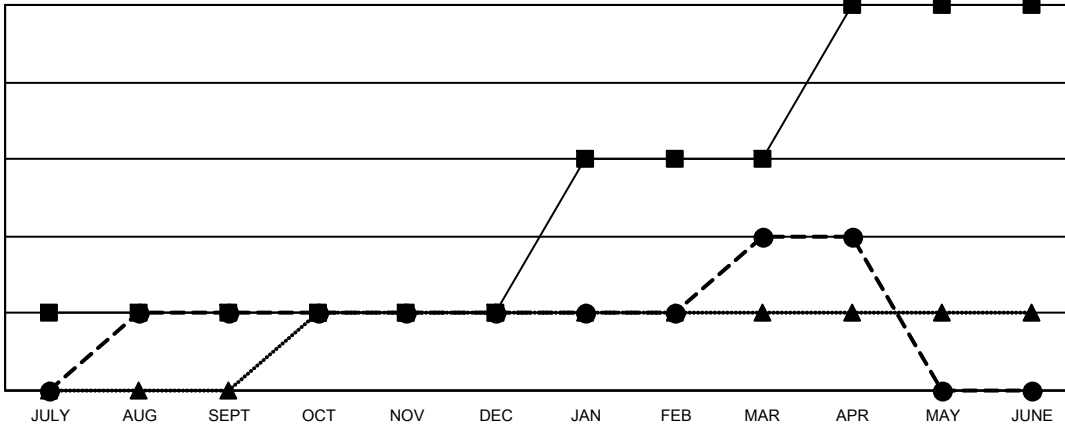
Multiple District 33

LOCATION: MASSACHUSETTS

Clubs			
RESULTS FOR 2020-2021			
QUARTER	NEW CLUB GOAL	NEW CLUBS	DROPPED CLUBS
JULY/AUG/SEPT	1	1	1
OCT/NOV/DEC	0	0	0
JAN/FEB/MAR	2	1	2
APR/MAY/JUNE	2	0	0

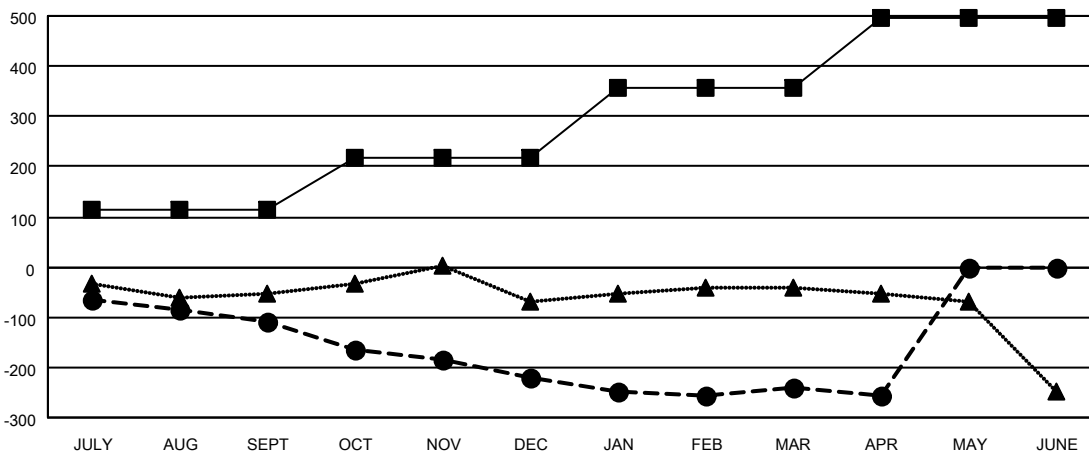
Members			
RESULTS FOR 2020-2021			
QUARTER	MEMBER GROWTH NET GOAL	MEMBER GROWTH ACTUAL	DROPPED MEMBERS ACTUAL (including transfers)
JULY/AUG/SEPT	115	98	183
OCT/NOV/DEC	102	86	172
JAN/FEB/MAR	140	84	98
APR/MAY/JUNE	140	16	25

GOALS AND ACTUAL NEW CLUBS CUMULATIVE



- - CURRENT YEAR GOALS FOR NEW CLUBS
- - CURRENT YEAR ACTUAL NEW CLUBS
- ▲ - LAST YEAR ACTUAL NEW CLUBS

GOALS AND ACTUAL MEMBERS CUMULATIVE



- - MEMBER GROWTH NET GOAL
- - MEMBER GROWTH ACTUAL
- ▲ - LAST YEAR MEMBERSHIP ACTUAL

DROPPED CLUBS: 3	
<u>DROPPED MEMBERS</u>	
DECEASED	97
CLUB CANCELLED	6
OTHER	375
TOTAL	478

72 CLUBS OF 219 ADDED 1 OR MORE NEW MEMBERS

[CLICK HERE FOR CUMULATIVE MEMBERSHIP DATA](#)

<u>GENDER DISTRIBUTION</u>	
MALE	4,246 (64.23%)
FEMALE	2,365 (35.77%)
TOTAL FAMILY UNIT MEMBERS	1,081
FAMILY MEMBERS PAYING HALF DUES	553